

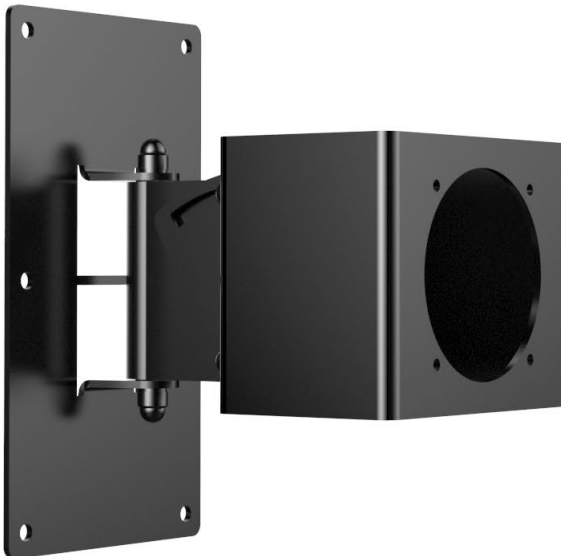
# Wall Mount

## One18 | Two15 | Two18

---

### Installation Overview

To ensure both safe and speedy installation, Amphion monitors can be equipped with our custom adaptor, which connects securely to industry-leading Konig & Meyer mounting hardware - a company recognized for providing a wide range of wall and ceiling mount solutions. The adaptor itself is fastened directly to the cabinet, using the cabinet's existing binding-post points. To ensure precise and vibration-free installation, the connection does not go in, but instead, through the material, and has a zero-flex approach applied to the adaptor design.



---

#### Applicable Models

One18 (Oriented vertically only)  
Two15 (Oriented vertically only)  
Two18 (Oriented vertically only)

---

#### Model Weights kg | Dimensions H x W x D

One18 - 12 kg | 380 x 191 x 305 mm  
Two15 - 12 kg | 510 x 160 x 265 mm  
Two18 - 18 kg | 550 x 191 x 305 mm

---

#### Parts

Amphion Adaptor (Monitor/Mount interface)  
3rd-Party Wall Mount (Konig & Meyer product - K&M 24481-000-55)

---

#### Installation Guidebook (For Installers)

<https://amphion.fi/create/support-pro-audio/technical-support/>

---

#### Advisories

See your local Distributor or Dealer for specific information on Price | Parts | Installation

Amphion recommends that a professional installer or qualified tradesperson install this system.