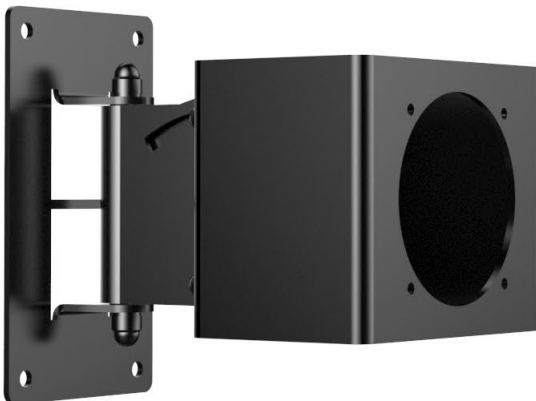


Wall Mount

One12 | One15

Installation Overview

To ensure both safe and speedy installation, Amphion monitors can be equipped with our custom adaptor, which connects securely to industry-leading Konig & Meyer mounting hardware - a company recognized for providing a wide range of wall and ceiling mount solutions. The adaptor itself is fastened directly to the cabinet, using the cabinet's existing binding-post points. To ensure precise and vibration-free installation, the connection does not go in, but instead, through the material, and has a zero-flex approach applied to the adaptor design.



Applicable Models

One12 (Oriented vertically or horizontally)
One15 (Oriented vertically or horizontally)

Model Weights kg | Dimensions H x W x D

One12 - 6 kg | 259 x 132 x 220 mm
One15 - 7 kg | 316 x 160 x 265 mm

Parts

Amphion Adaptor (Monitor/Mount interface)
3rd-Party Wall Mount (Konig & Meyer product - K&M 24471-000-55)

Installation Guidebook (For Installers)

<https://amphion.fi/create/support-pro-audio/technical-support/>

Advisories

See your local Distributor or Dealer for specific information on
Price | Parts | Installation

Amphion recommends that a professional installer or qualified tradesperson install this system.